

OCIANA® : Your Solution for Accurate Multi-Stop Estimated Time of Arrival (ETA) and Estimated Time of Departure (ETD) Predictions

Ongoing vessel delays and port congestion?

Capacity management challenges?

Need for more accurate predictions?

An ongoing maritime industry challenge is ETA reporting. If the self-reported ETA of vessels are inaccurate or unreliable, event planning across maritime stakeholders such as ports, terminals, shipping companies, pilotages and waterways, is compromised. More accurate multi-stop ETA predictions in dynamic environments will facilitate better planning and informed decisions in real time.



OCIANA's Multi-stop ETA and ETD Predictions

OCIANA's multi-stop ETA prediction not only considers vessel speed and route, it is also augmented by industry leading AI models which are uniquely trained on historical data consisting of a large array of features that represent different causal factors affecting a vessel's turn-around time at a port. The models work across multiple dimensions, accounting for every vessel's unique characteristics, environmental conditions, port traffic and regional traffic factors.

Accurate ETAs enable ships to optimise steaming speed, reduce fuel consumption and emissions. Additionally avoiding penalties for delayed arrival contribute to overall lower voyage costs.

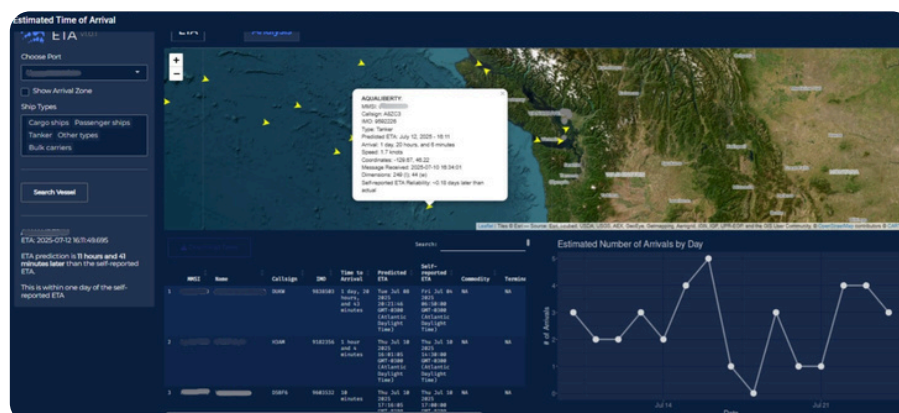
Benefits of OCIANA's ETA and ETD Predictions

Key maritime stakeholders, including ports, terminals, shipping companies, pilotages and waterways, will transform their operations with OCIANA®. Benefits include:

- More accurate predictions and reliability of data for multi-party coordinated event planning
- Minimised delays and congestions for all maritime stakeholders
- Ability to continuously receive updates in real time based on changes in dynamic environments; as ETD of a berthed vessel changes, ongoing updates of incoming vessel's ETA prevents a domino effect
- Facilitation of Just-in-Time (JIT) Arrivals towards operational efficiencies and sustainability
- Enhanced coordination with land side logistics to optimise flow of goods and services
- Streamlining operations towards better scheduling and optimised resource planning (equipment, services, people)

The screenshot displays the OCIANA web application interface. It features a top navigation bar with the OCIANA logo and various menu options. The main content area is divided into several sections: a left sidebar with filters, a central table of vessel arrivals and departures, and a right sidebar with a map and additional vessel details. The table lists various vessels with columns for arrival and departure times, vessel names, and other relevant data.

Predicting Incoming Vessels in Real Time based on Checkpoints



Multi-Stop ETA filtered by Port and Ship Type

Contact us at: sales@gsts.ca