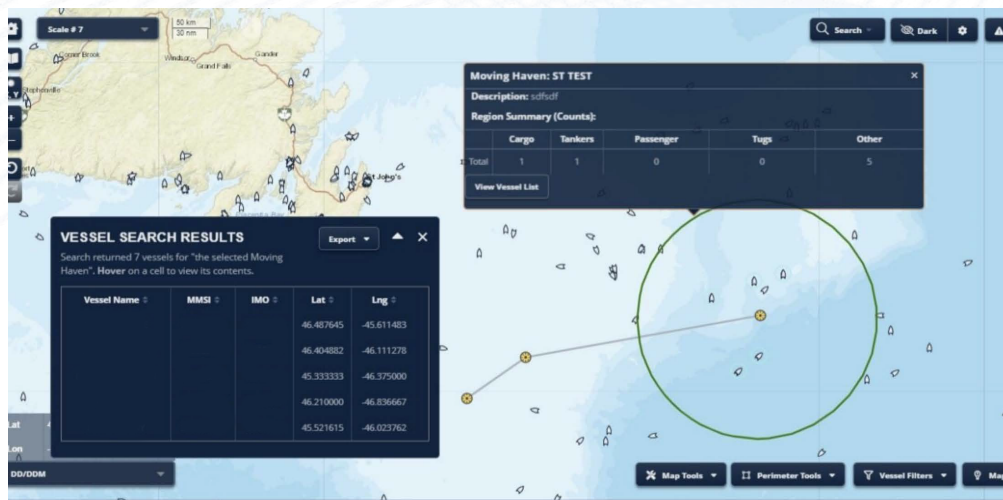


# OCIANA®: Vessel Moving Havens – A New Capability for Monitoring Regions of Interest

The Vessel Moving Haven capability is a new perimeter tool that allows OCIANA® users to monitor a region in a similar manner as a geofence. Additional functionality (vis-à-vis a geofence which can be triggered on entry, on leave, on cross, on speed, on dark) facilitates the moving haven perimeter to determine a vessel's present position automatically according to a pre-determined path. This path consists of a series of waypoints - a coordinate pair with a time stamp. The haven boundary moves along the path at every processing interval (approximately every ten minutes) based on the interpolation of the way point times of arrival.

Vessel Moving Havens contain the same event notification functionality as geofences in OCIANA®, as well as a popup description of the vessels currently within the haven. The Vessel Moving Haven functionality was designed to allow movement along a path for a vessel that may not be currently sending AIS messages, or not at the frequency desired for updated movements. A Moving Haven path thus need not be related in any way to a vessels' actual movements.

Alternately, the Moving Haven can also be configured without a path definition. The Vessel Moving Haven capability has the ability to determine its position based on the incoming positional AIS messages of a selected vessel. This means that a perimeter of awareness around a vessel can be set based on the vessel's actual movements, rather than by a pre-determined path with waypoints. In the future, Vessel Moving Havens in OCIANA® also includes the ability to assess not only what is occurring within the current haven boundary, but also predict traffic within the surrounding area of future positions of the selected vessels.



Contact us at: [sales@gsts.ca](mailto:sales@gsts.ca)